

Banana Boat Song

Trombone

B \flat

F



Come Mis-ter Tal-ly Man Tal-ly me ba-na-nas

3

B \flat

F

B \flat

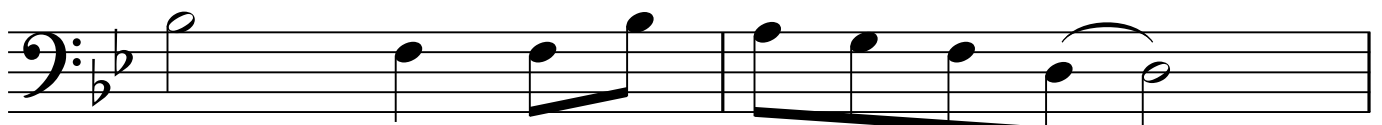


Day light come_ and me wan' go home.

5

B \flat

F



Day - o me say da - o -

7

B \flat

F

B \flat



Day light come_ and me wan' go home.