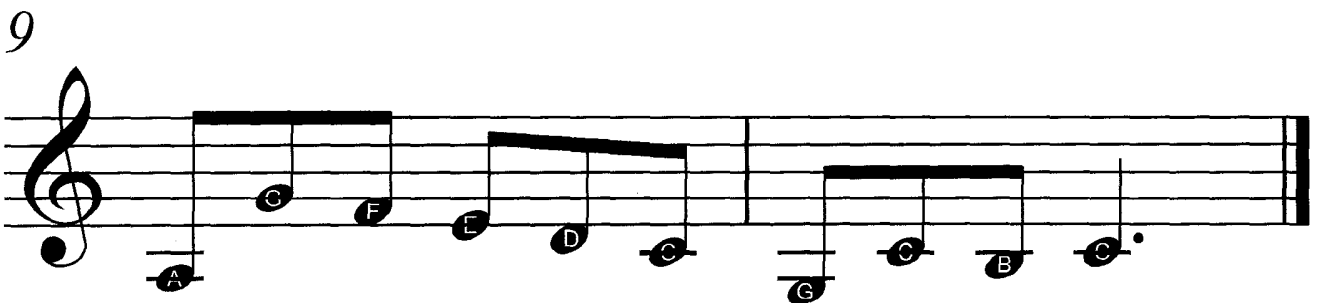
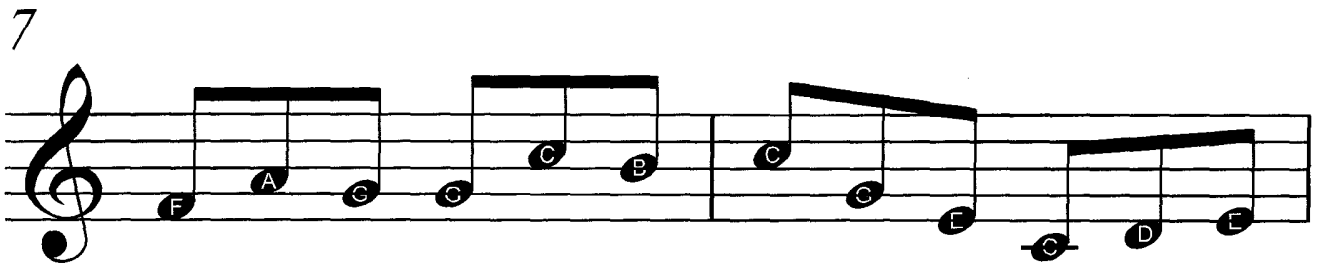
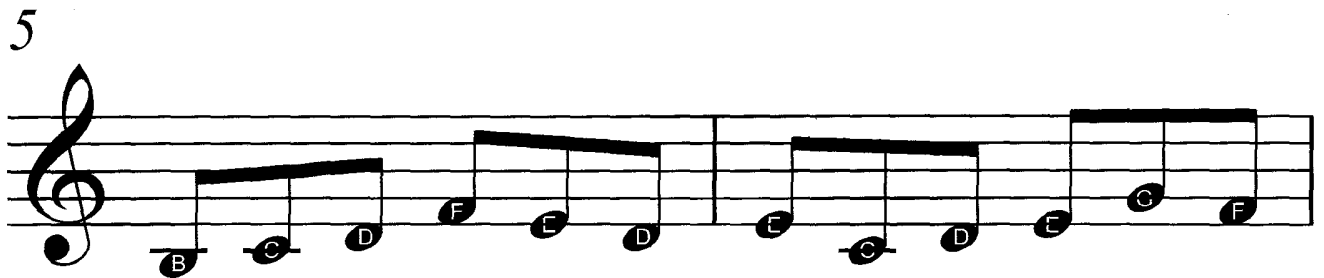
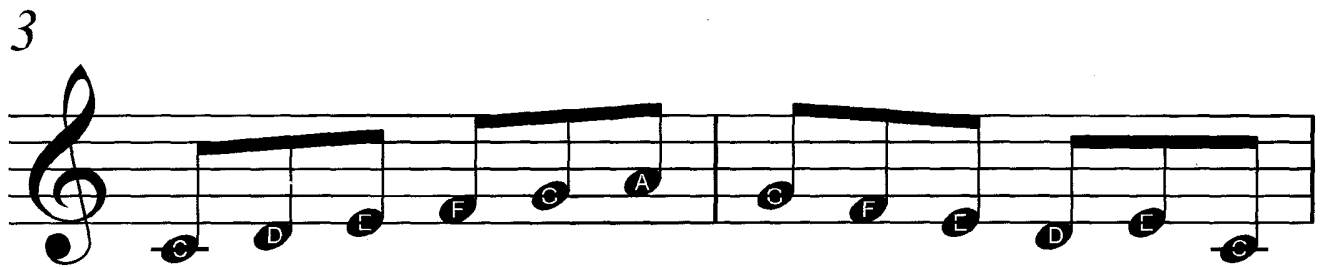
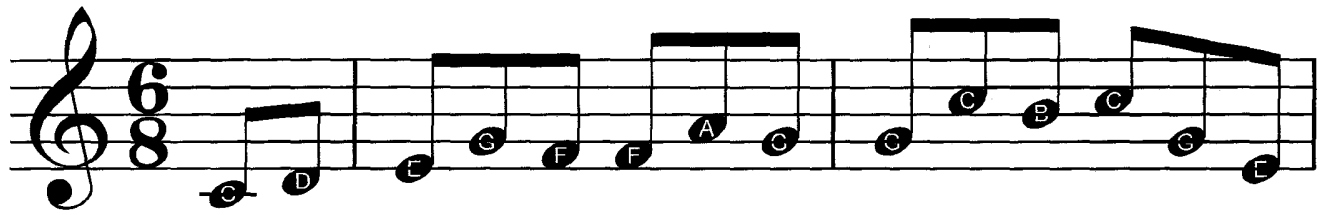


# Jesu Joy of Man's Desiring

JS Bach (Baroque Age)



# Jesu Joy of Man's Desiring

JS Bach (Baroque Age)

Acoustic Guitar

Acoustic guitar tablature for the first system. The treble clef staff shows a sequence of notes: 1, 3, 0, 3, 1, 1, 5, 3. Above the staff, brackets indicate groupings: a bracket over 1 and 3; a bracket over 0, 3, and 1; and a bracket over 1, 5, and 3. To the left of the staff, the strings are labeled T (Treble), A (Acoustic), and B (Bass). The numbers 6 and 8 are written vertically next to the A and B strings respectively.

A. Gtr.

Acoustic guitar tablature for the second system. The treble clef staff shows a sequence of notes: 3, 8, 7, 8, 3, 0, 1, 3, 0, 1, 3, 5. Above the staff, brackets indicate groupings: a bracket over 3, 8, and 7; a bracket over 8, 3, and 0; a bracket over 1, 3, and 0; and a bracket over 1, 3, and 5. The strings are labeled T, A, and B.

A. Gtr.

Acoustic guitar tablature for the third system. The treble clef staff shows a sequence of notes: 3, 1, 0, 3, 0, 1, 0, 1, 3, 1, 0, 3. Above the staff, brackets indicate groupings: a bracket over 3, 1, and 0; a bracket over 3, 0, and 1; a bracket over 0, 1, and 3; and a bracket over 1, 0, and 3. The strings are labeled T, A, and B.

A. Gtr.

Acoustic guitar tablature for the fourth system. The treble clef staff shows a sequence of notes: 0, 1, 3, 0, 3, 1, 1, 5, 3, 3, 8, 7. Above the staff, brackets indicate groupings: a bracket over 0, 1, and 3; a bracket over 0, 3, and 1; a bracket over 1, 5, and 3; and a bracket over 3, 8, and 7. The strings are labeled T, A, and B.

A. Gtr.

Acoustic guitar tablature for the fifth system. The treble clef staff shows a sequence of notes: 8, 3, 0, 1, 3, 0, 3, 1, 0, 3, 1, 1, 0, 1. Above the staff, brackets indicate groupings: a bracket over 8, 3, and 0; a bracket over 1, 3, and 0; a bracket over 3, 1, and 0; a bracket over 3, 1; and a bracket over 1, 0, and 1. The strings are labeled T, A, and B. A double bar line is at the end of the system.